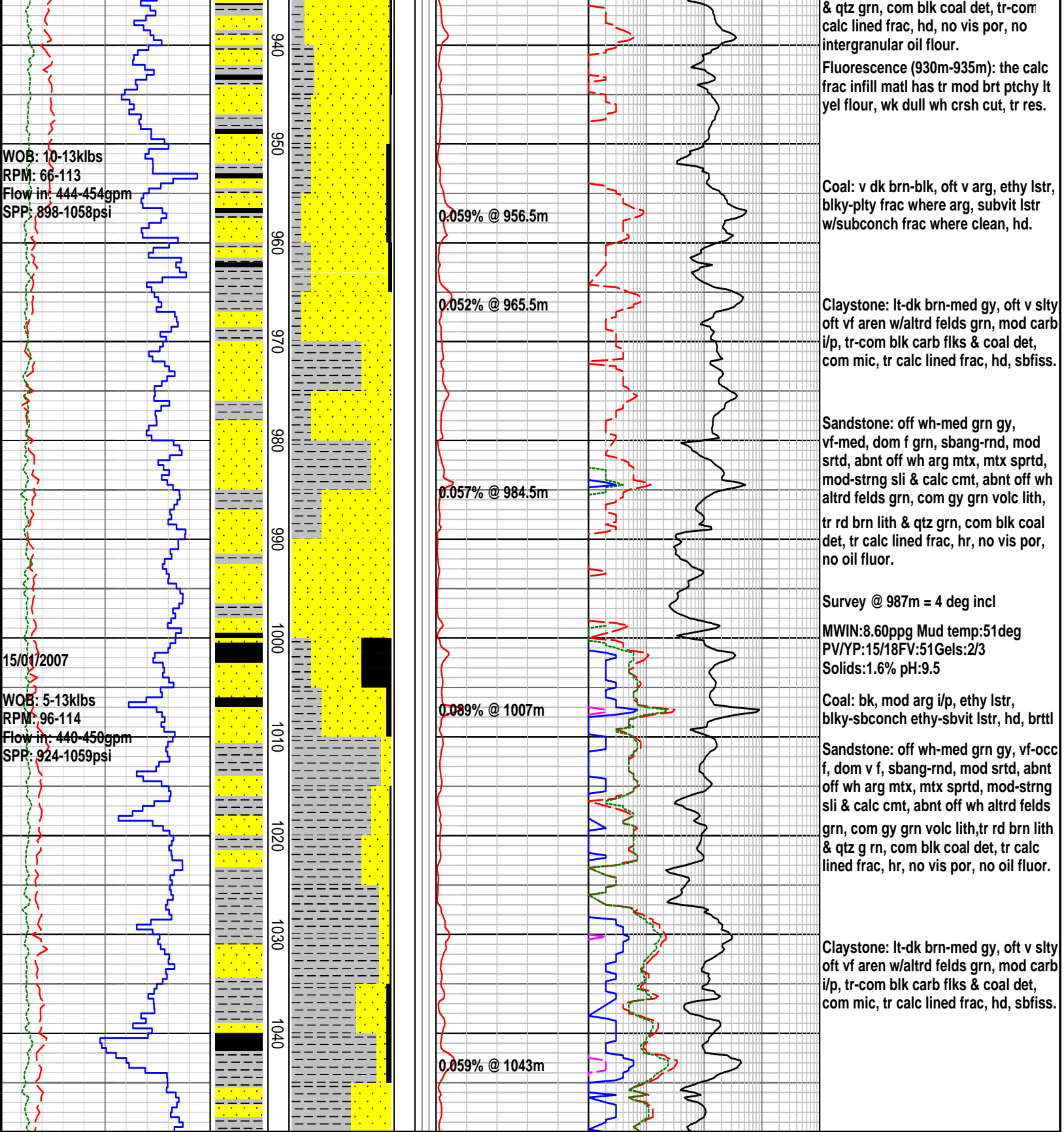


FORMATION EVALUATION LOG

RATE OF PENETRATION		INTERPRETED LITHOLOGY	MD meters 1:500	LITHOLOGY	CORE	OIL SHOWS	TOTAL GAS	CHROMATOGRAPH		REMARKS
ROP (0-50m/hr)	Backup ROP (50-200m/hr)							1	Methane ppm	
5 10 15 20 25 30 35 40 45 50	5 10 15 20 25 30 35 40 45 50						0.1 0.2 0.3 0.4 0.5 %	10000	10000	
<div> <div> <div>WOB: 2-16klbs</div> <div>RPM: 65-135</div> <div>Flow in: 438-456gpm</div> <div>SPP: 890-1032psi</div> </div> <div> <div>WOB: 6-14klbs</div> <div>RPM: 71-111</div> <div>Flow in: 445-450gpm</div> <div>SPP: 943-1027psi</div> </div> </div>										
<div> <div>0.068% @ 854m</div> <div>0.061% @ 863.5m</div> <div>0.079% @ 878.5m</div> <div>0.079% @ 901m</div> <div>0.056% @ 921.5m</div> </div>										
<div> <div>Claystone: lt-dk bn gy-med bn gy, oft v slty, oft v f aren w/altrd felds grn, mod carb i/p, tr-com blk carb flks & coaly det, com mic, tr cacil lined frac, mod hd, sbfiss.</div> <div>Coal: v dk bn-bk, oft v arg, ethy lstr, blk-y-pty frac where arg, sbvit lstr w/sbconch frac where clean, hd.</div> <div>Claystone: lt-dk bn gy-med gy, oft v slty, oft v f aren w/altrd felds grn, mod carb i/p, abdnt blk carb flks & coaly det, com mic, com cacil lined frac, mod hd, sbfiss.</div> <div>Survey @ 884m = 3 deg incl</div> <div>MWIN:8.65ppg Mud temp:44deg PV/YP:14/15FV:49Gels:1/2 Solids:1.9% pH:10.0</div> <div>Coal: v dk bn-bk, oft v arg, ethy lstr, blk-y-pty frac where arg, sbvit lstr w/sbconch frac where clean, hd.</div> <div>Claystone: lt-dk bn gy-med gy, oft v slty, oft v f aren w/altrd felds grn, mod carb i/p, abdnt blk carb flks & coaly det, com mic, com cacil lined frac, mod hd, sbfiss.</div> <div>Sandstone: off wh-med grn gy, vf-occ med, dom f, sbang-rnd, mod srtd, abnt off wh arg mttx, mttx sprtd, mod-strng sil & calc cmt, abnt off wh grn, felds grn volc lith, tr rd brn lith</div> </div>										



FORMATION EVALUATION LOG

RATE OF PENETRATION																	MD meters 1:500	INTERPRETED LITHOLOGY	LITHOLOGY	CORE	OIL SHOWS	TOTAL GAS	CHROMATOGRAPH				REMARKS
ROP (0-50m/hr)																							1	Methane ppm		10000	
Backup ROP (50-200m/hr)																							1	Ethane ppm		10000	
WOB (klb)																							1	Propane ppm		10000	
TORQUE AVG																							1	iso-Butane ppm		10000	
																							1	n-Butane ppm		10000	
																							1	iso-Pentane ppm		10000	
5 10 15 20 25 30 35 40 45 50																	0.1 0.2 0.3 0.4 0.5		TOTAL GAS								
50 45 40 35 30 25 20 15 10 5																	%										
200 185 170 155 140 125 110 95 80 65																											

										n-Pentane ppm						
										10		100		1000		10000